

Lime Close, Harrow, HA3

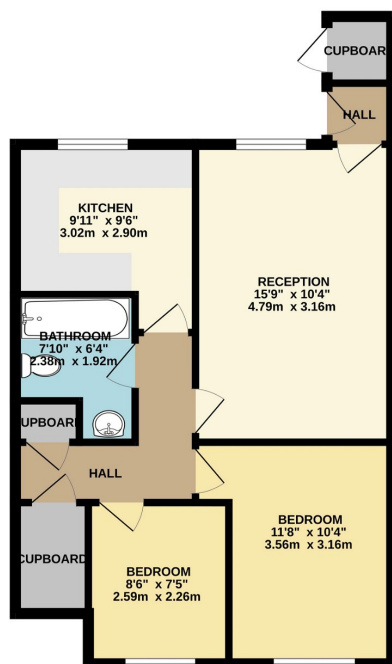
£315,000

🛏️ 2 🍽️ 1 🚗 1



- Ground floor maisonette
- Lounge
- Gas central heating
- Communal gardens
- Close to Belmont Circle shops
- Two bedrooms
- Family bathroom / wc
- Resident parking space
- 94 year lease
- Close to various primary schools

GROUND FLOOR
557 sq.ft. (51.7 sq.m.) approx.



TOTAL FLOOR AREA: 557 sq.ft. (51.7 sq.m.) approx.
Whilst every attempt has been made to ensure the accuracy of the floorplan contained here, measurements of doors, windows, rooms and any other items are approximate and no responsibility is taken for any error, omission or mis-statement. This plan is for illustrative purposes only and should be used as such for any prospective purchaser. The services, fittings and appliances shown have not been tested and no guarantee as to their operability or efficiency can be given.
Made with Metropix 02023

A well presented two bedroom ground floor maisonette with own resident parking space, gas central heating and communal gardens. This has a lease starting from April 1992 with a 125 year lease, so has a remaining length of lease of 94 years, ground rent £150 per annum and a service charge of £220 per annum. Located close to Belmont Circle for shops, bus routes, Belmont Health Centre, St Joseph, Belmont and Weald Rise primary schools. Also located within a short bus ride of Park High, Stanburn, Whitchurch and Avanti schools.